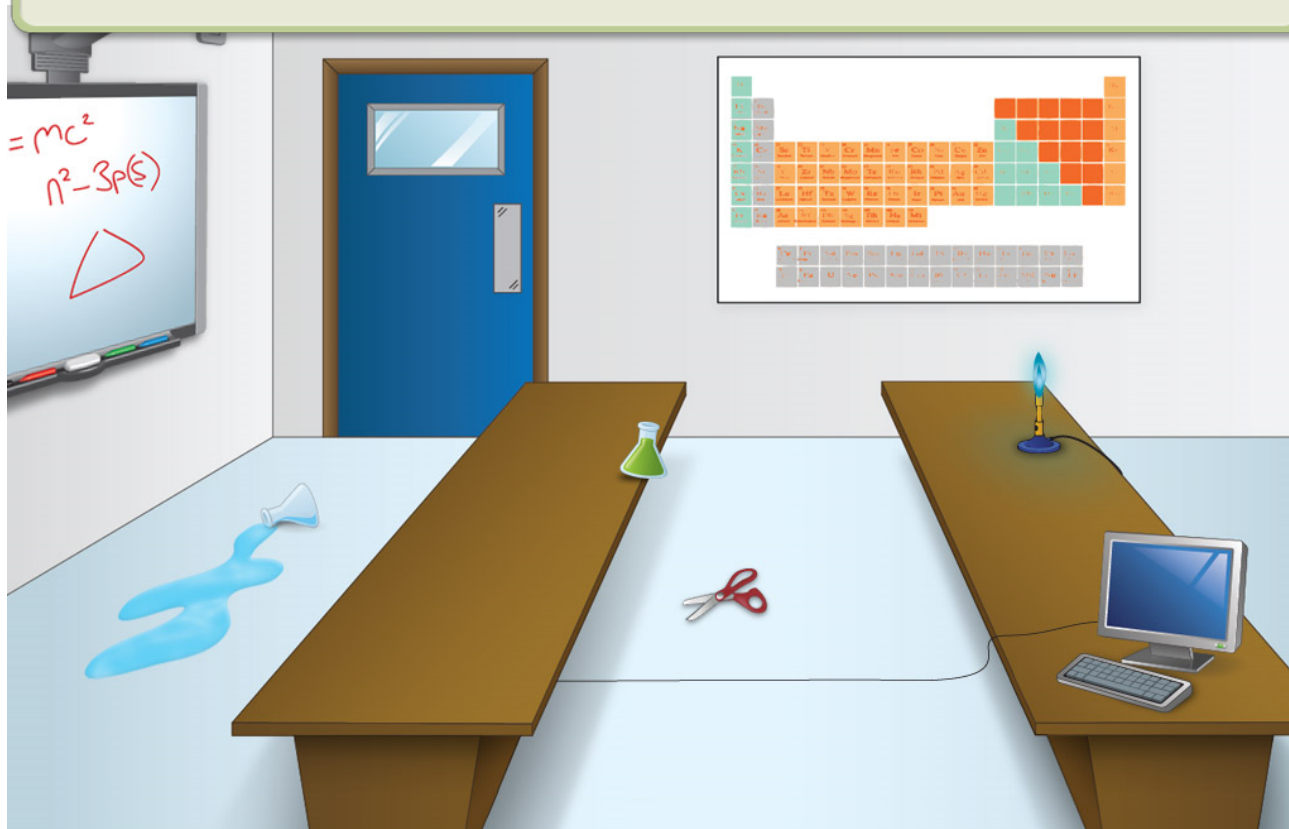


2. Safety Notes.notebook

Look at the image below. Using the Pen, circle the objects or areas of the lab that are dangerous. When you are finished, press the play button at the bottom of the screen to reveal the answers.



To ensure safety in the laboratory, we need rules. Here are some important ones.

Dress appropriately for the lab. Wear protective clothing when necessary.

Report any **breaks**, **spills**, or other **accidents** to the teacher.

Follow directions carefully.

Do not bring **food** or **drinks** to the lab.

Know the class **emergency action plan** for various scenarios.

2. Safety Notes.notebook

To ensure safety in the laboratory, we need rules. Here are some important ones.

Leave your lab area the way you found it (clean). Return all materials where they belong.

Walk through the room. No running or horseplay.

Handle potentially dangerous materials carefully, the way they are intended to be used.

Know the location of various safety equipment.

Should I report this to my teacher?

Fire

Electrical shock

Broken lab equipment

Spilled water

Cracked glass

Spilled chemicals

Nose bleed

Answer:

YES!!!